

ihgallery.com, email diane@ihgallery.com, or call (347) 387-3212.

The Marleau Gallery: “Four Fellows”

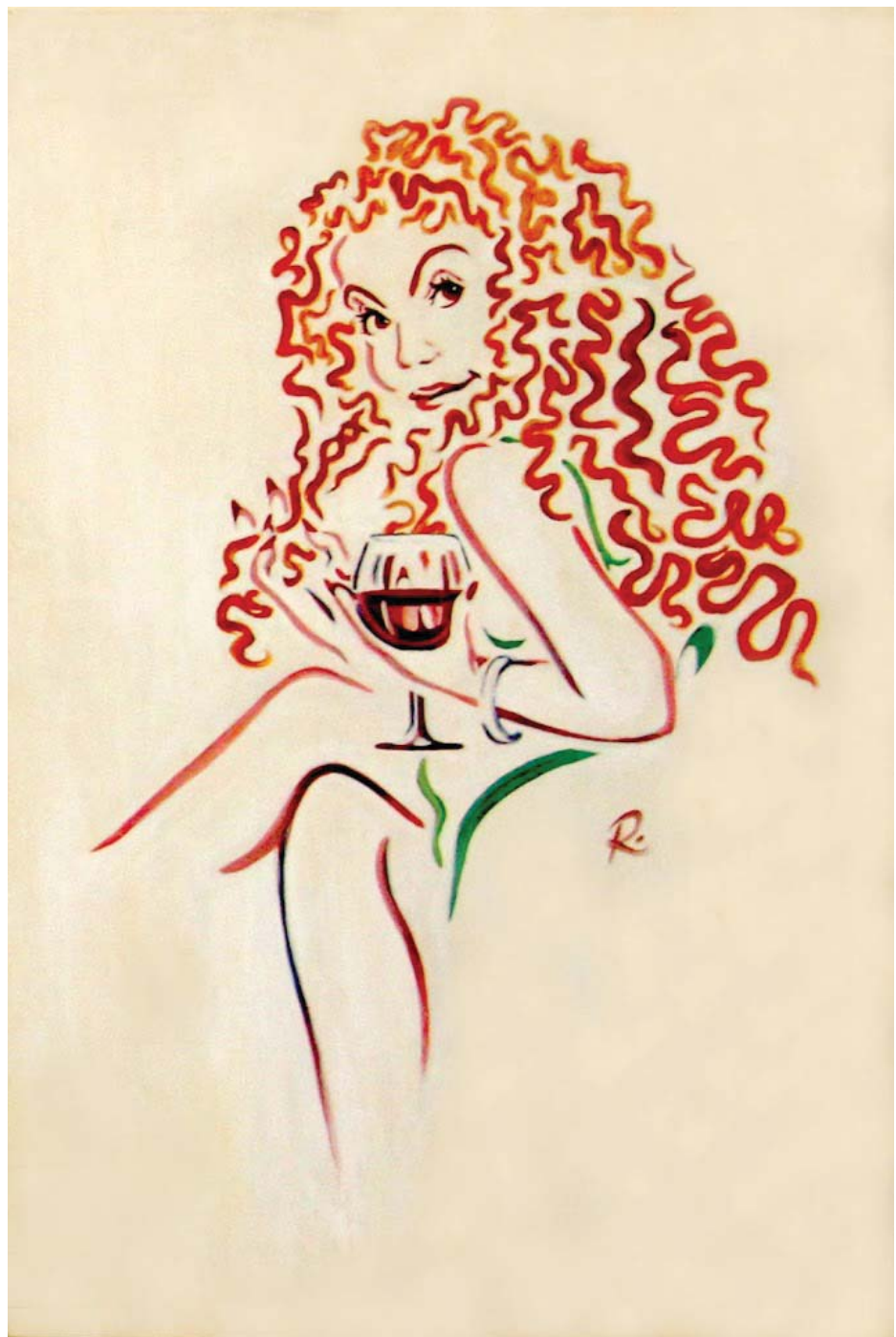
The Marleau Gallery at 99 Partition St. is showing “Four Fellows,” to remain on view for two months, through the end of October.

It features the work of Sara Conca, Robert George, Michael Ciccone, and Richard Gamache. Gallery director Nicolette Cook says that the initial inspiration for the concept of the show was the close friendship between three of the artists; Conca, George, and Ciccone. After meeting them herself and finding similarities in their work of rough and yet refined textures, she decided to feature the three together, and to include Richard Gamache as well. In thinking of the four as fellow artists and not just friends, the idea for “four fellows” was realized.

Sara Conca’s paintings in the show are large canvases, primarily in oil or mixed media. They’re expressionistic and abstract, sweeping paint strokes rendered large. Several canvases utilize a lot of gold paint, which the artist says on her website is something she likes to use because it gives each piece energy from the reflected and refracted light.

Sculptor Robert George was profiled in this newspaper last week. His works at the Marleau Gallery are figural, about two feet in height, made of terracotta or bronze. When profiled by our writer, George said he defines himself as an expressionist, preferring to work on the human form, mostly nudes rendered in clay, and his interest is in exploring a sense of potential energy and imminent motion in his figures.

Michael Ciccone’s steel cable and forged steel “Knot #6,” 78” x 24” x 12” in size, is as gestural as the quick line drawings done in a life-drawing session, meant to convey the essence of the form, only



here it’s a drawn line rendered solid with heavy steel cable. In a statement on his website, the artist confirms that initial impression, saying that he indeed intends exactly that, to “draw in space” with steel. The pieces at the gallery have both an airy graceful linear quality and an industrial solidity, not an easy contradiction to pull off.

Richard (Marleau) Gamache is a co-owner of the gallery, along with Kevin Hinchey. A resident of Saugerties, Gamache is showing satirical portraits

drawn in colored pencil as well as several large paintings with similar subject matter. “Girl Twirling Her Hair” is an oil on birch, 24” x 36,” depicting a stylized image of a curly-haired woman with a glass of wine.

The Marleau Gallery is located at 99 Partition St. in the village of Saugerties. Gallery hours are Thursday-Saturday 11 a.m.-9 p.m. and Sunday, 10 a.m.-7 p.m. For more information, visit www.saugertiesartgallery.com or call 246-5006. ●

ADAMS FAIRACRE FARMS

Super Farm Market



www.adamsfarms.com

POUGHKEEPSIE ROUTE 44 845-454-4330	KINGSTON ROUTE 9W 845-336-6300	NEWBURGH ROUTE 300 845-569-0303	WAPPINGER ROUTE 9 845-632-9955
--	--------------------------------------	---------------------------------------	--------------------------------------

